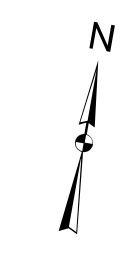


PROPERTY MAPS
Tax Map 1
DETROIT
 Somerset County, ME

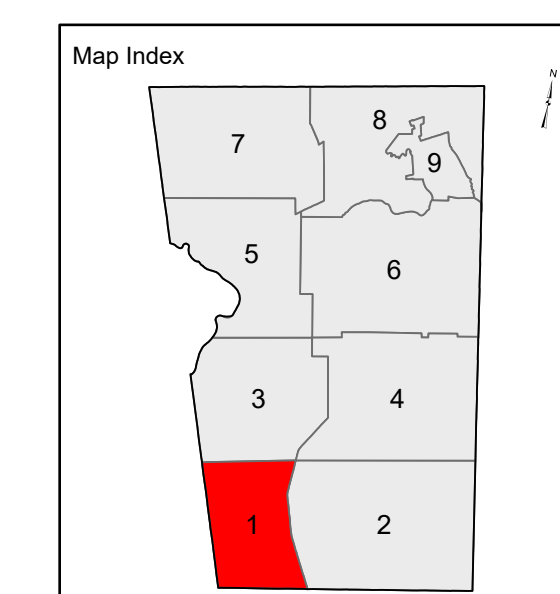
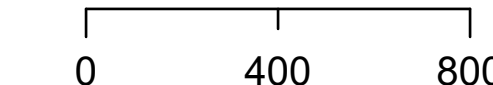


LEGEND

- PROPERTY LINE
- PUBLIC RIGHT-OF-WAY
- PRIVATE RIGHT-OF-WAY
- RAILROAD RIGHT-OF-WAY
- HISTORIC/SUBDIVISION LINE
- EASEMENT
- PARCEL HOOK
- 2-1** PARCEL ID NUMBER
- 150' SURVEY DIMENSION (FEET)
- 1' SURVEY LOT NUMBER
- 1.25 AC ASSESSED ACREAGE
- HYDROLOGY

The information on this map is for assessment purposes only, is not a legal survey, and is not intended to be used for conveyance.

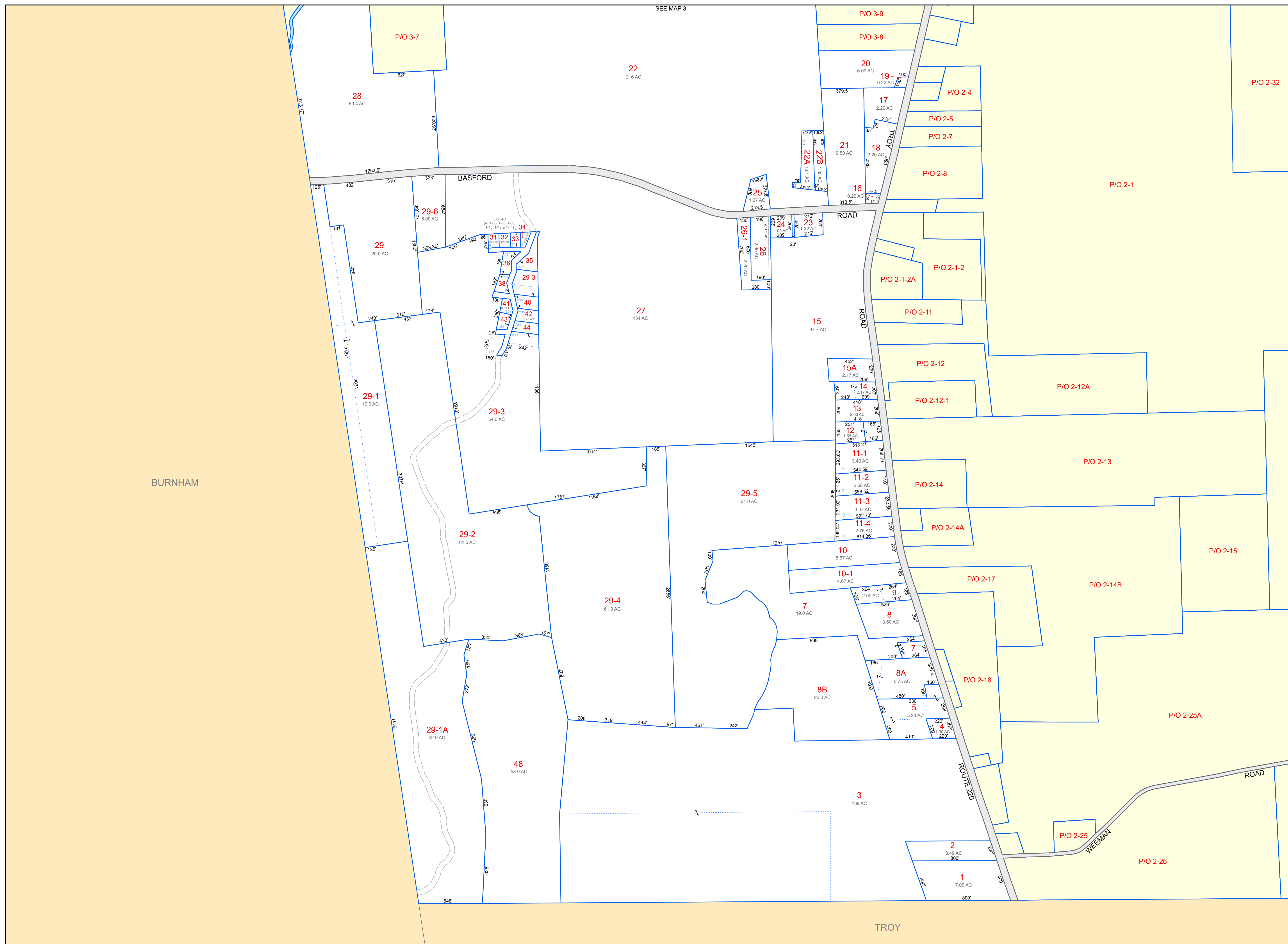
SCALE: 1 in = 400 ft



Original map prepared by Eastern Mapping Services
 Map updated by LatLong Logic, LLC with
 Maine Assessment and Appraisal Services, Inc.

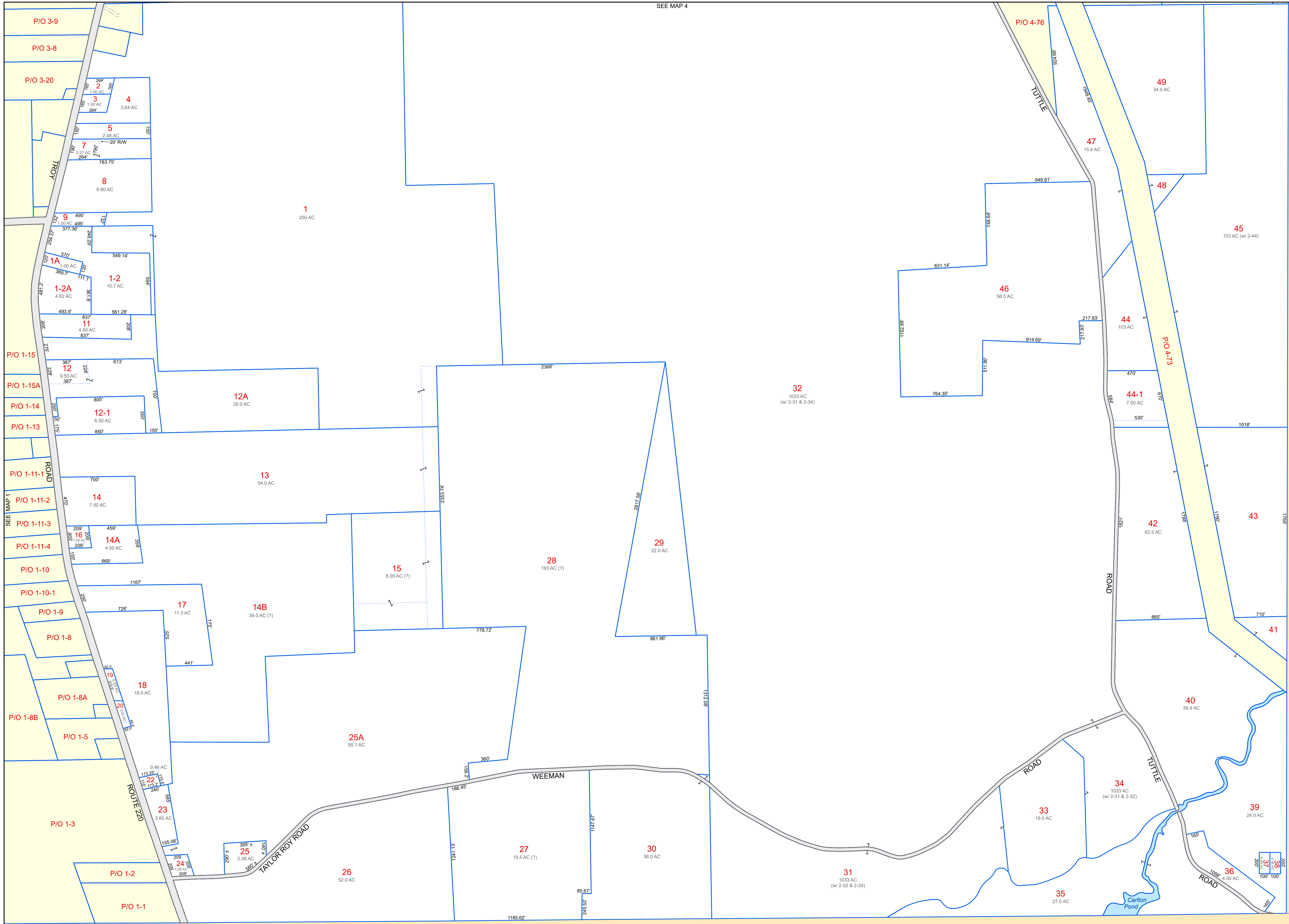
Assessment date: April 1, 2023
 Print date: 10/31/2024

Detroit Assessor's Office
 35 South Main Street
 Detroit, Maine 04929
 (207) 257-4488



SEE MAP 3

SEE MAP 2

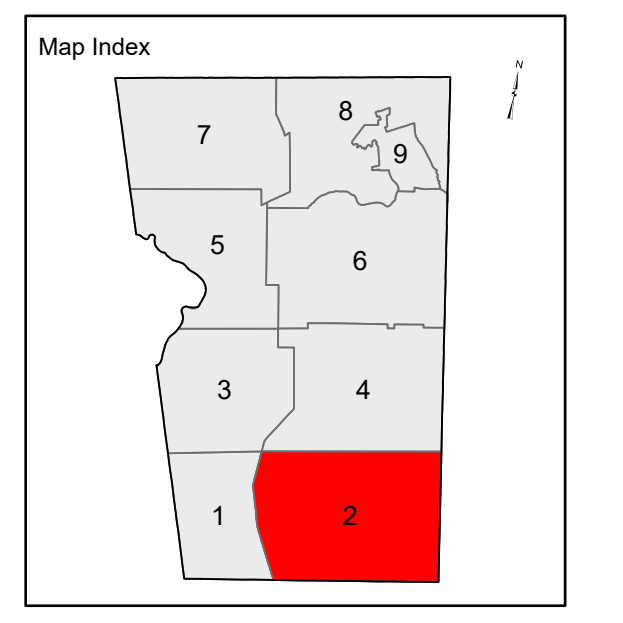
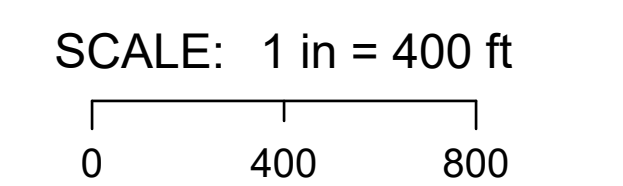


PROPERTY MAPS
Tax Map 2
DETROIT
 Somerset County, ME



- LEGEND**
- PROPERTY LINE
 - PUBLIC RIGHT-OF-WAY
 - PRIVATE RIGHT-OF-WAY
 - RAILROAD RIGHT-OF-WAY
 - HISTORIC/SUBDIVISION LINE
 - EASEMENT
 - PARCEL HOOK
 - 2-1** PARCEL ID NUMBER
 - 150'** SURVEY DIMENSION (FEET)
 - 1** SURVEY LOT NUMBER
 - 1.25 AC** ASSESSED ACREAGE
 - HYDROLOGY

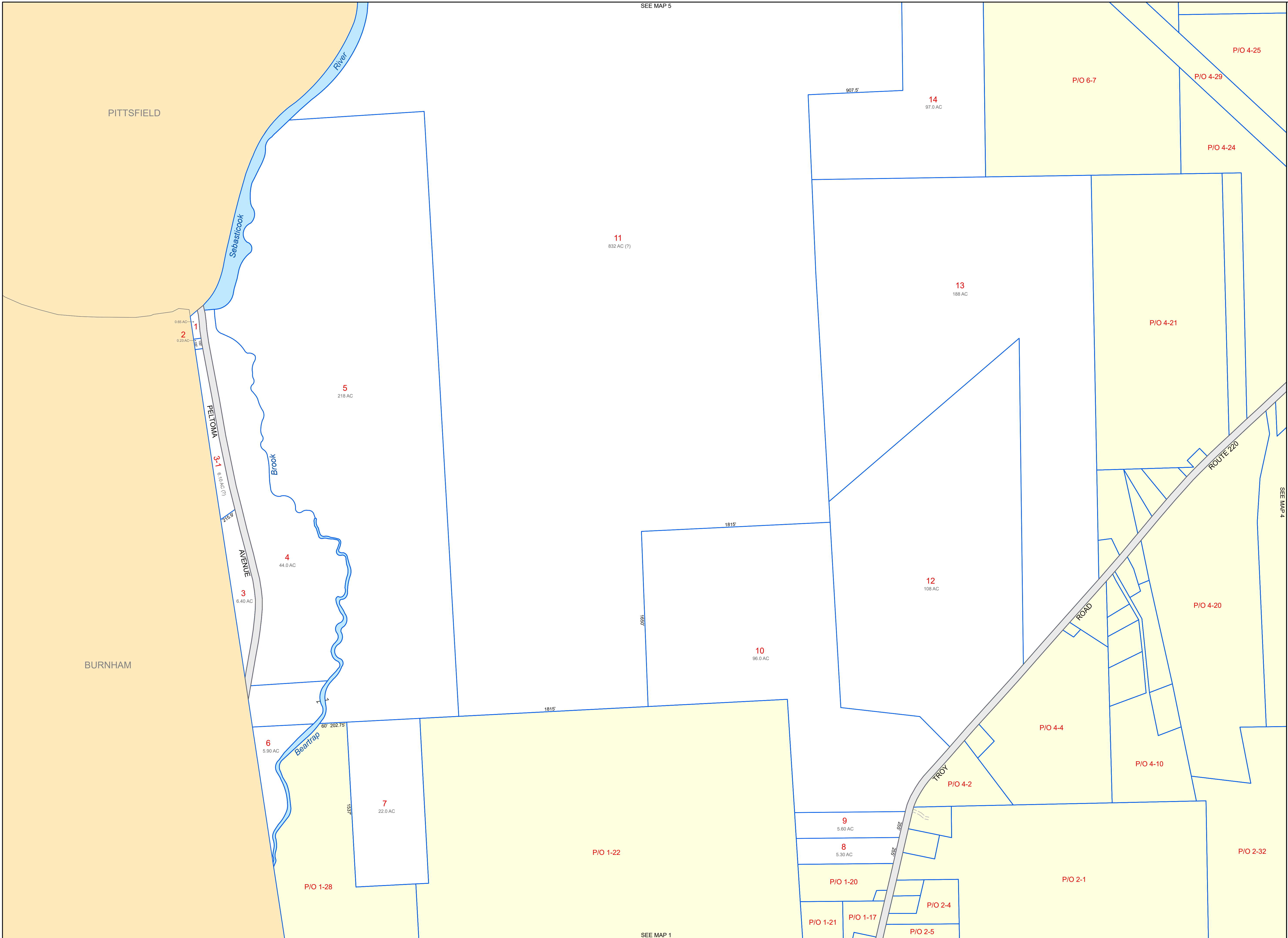
The information on this map is for assessment purposes only, is not a legal survey, and is not intended to be used for conveyance.



Original map prepared by Eastern Mapping Services
 Map updated by LatLong Logic, LLC with
 Maine Assessment and Appraisal Services, Inc.

Assessment date: April 1, 2023
 Print date: 10/31/2024

Detroit Assessor's Office
 35 South Main Street
 Detroit, Maine 04929
 (207) 257-4488



SEE MAP 5

SEE MAP 1

PROPERTY MAPS
Tax Map
3
DETROIT
 Somerset County, ME

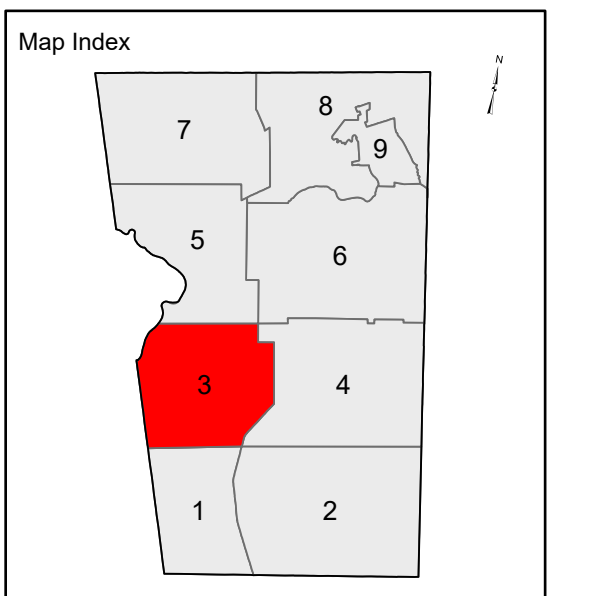


LEGEND

- PROPERTY LINE
- PUBLIC RIGHT-OF-WAY
- PRIVATE RIGHT-OF-WAY
- RAILROAD RIGHT-OF-WAY
- HISTORIC/SUBDIVISION LINE
- EASEMENT
- PARCEL HOOK
- 2-1** PARCEL ID NUMBER
- 150'** SURVEY DIMENSION (FEET)
- 1** SURVEY LOT NUMBER
- 1.25 AC** ASSESSED ACREAGE
- HYDROLOGY

The information on this map is for assessment purposes only, is not a legal survey, and is not intended to be used for conveyance.

SCALE: 1 in = 400 ft



Original map prepared by Eastern Mapping Services
 Map updated by LatLong Logic, LLC with
 Maine Assessment and Appraisal Services, Inc.

Assessment date: April 1, 2023
 Print date: 10/31/2024

Detroit Assessor's Office
 35 South Main Street
 Detroit, Maine 04929
 (207) 257-4488

PROPERTY MAPS
Tax Map
4
DETROIT
 Somerset County, ME

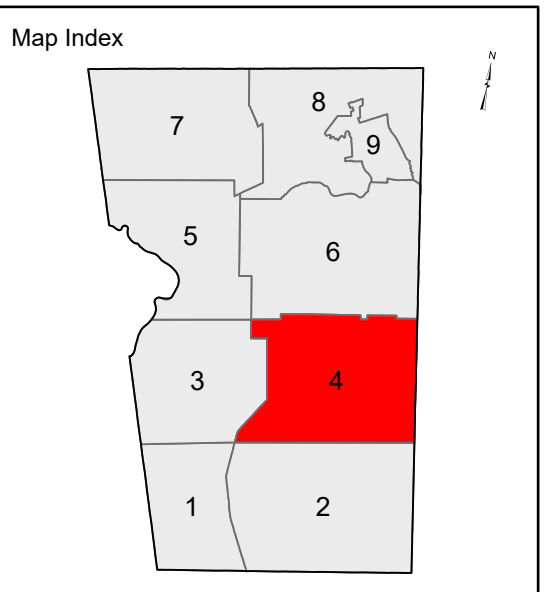
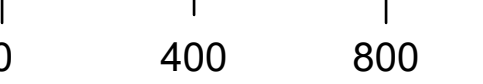


LEGEND

- PROPERTY LINE
- PUBLIC RIGHT-OF-WAY
- PRIVATE RIGHT-OF-WAY
- RAILROAD RIGHT-OF-WAY
- HISTORIC/SUBDIVISION LINE
- EASEMENT
- PARCEL HOOK
- 2-1** PARCEL ID NUMBER
- 150'** SURVEY DIMENSION (FEET)
- 1** SURVEY LOT NUMBER
- 1.25 AC** ASSESSED ACREAGE
- HYDROLOGY

The information on this map is for assessment purposes only, is not a legal survey, and is not intended to be used for conveyance.

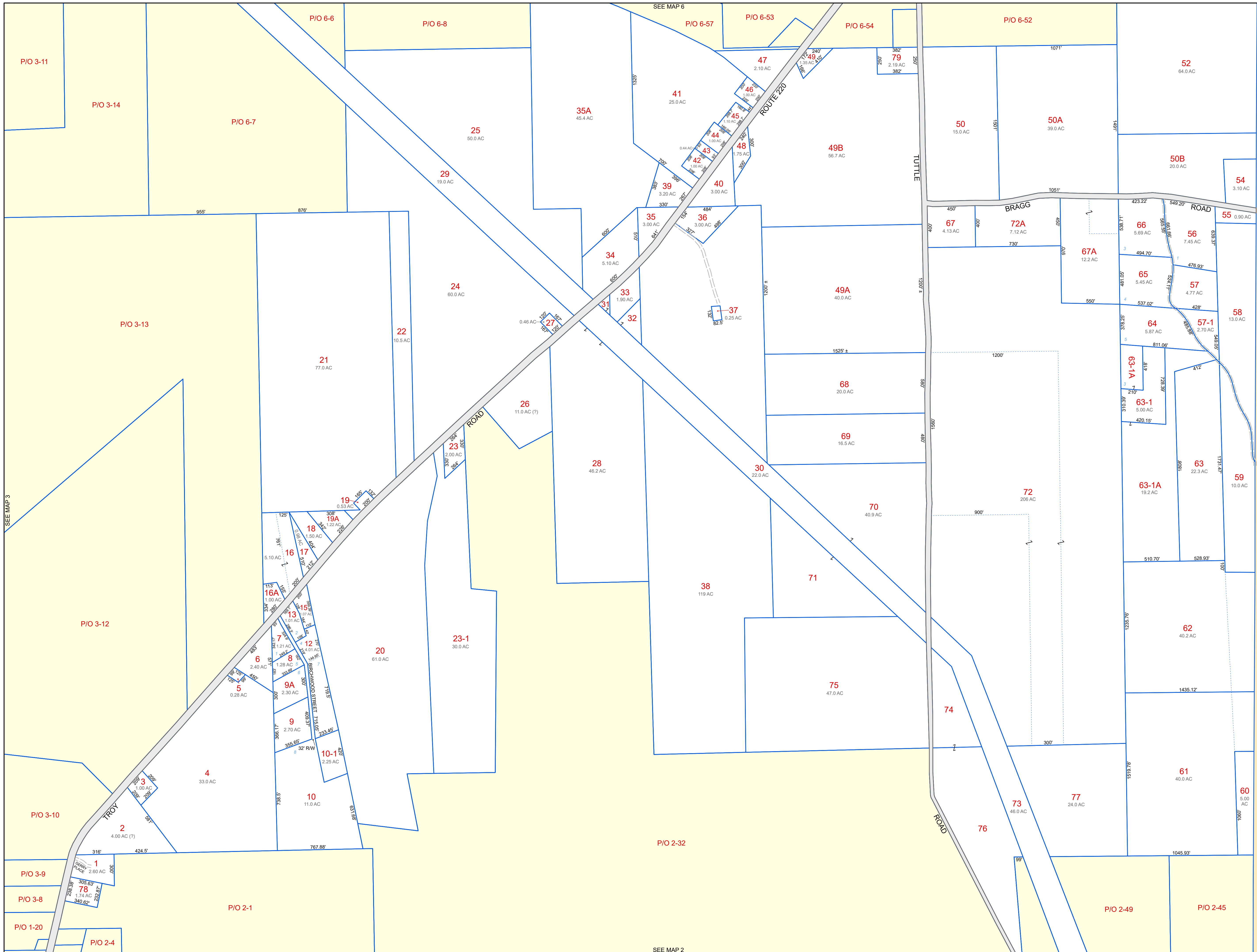
SCALE: 1 in = 400 ft



Original map prepared by Eastern Mapping Services
 Map updated by LatLong Logic, LLC with
 Maine Assessment and Appraisal Services, Inc.

Assessment date: April 1, 2023
 Print date: 10/31/2024








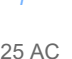



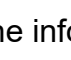
Detroit Assessor's Office
 35 South Main Street
 Detroit, Maine 04929
 (207) 257-4488



PROPERTY MAPS
**Tax Map
 5**
DETROIT
 Somerset County, ME

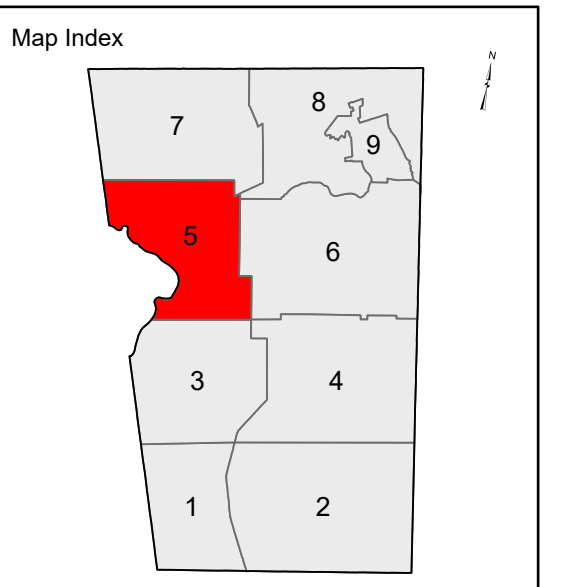


LEGEND

-  PROPERTY LINE
-  PUBLIC RIGHT-OF-WAY
-  PRIVATE RIGHT-OF-WAY
-  RAILROAD RIGHT-OF-WAY
-  HISTORIC/SUBDIVISION LINE
-  EASEMENT
-  PARCEL HOOK
-  PARCEL ID NUMBER
-  SURVEY DIMENSION (FEET)
-  SURVEY LOT NUMBER
-  ASSESSED ACREAGE
-  HYDROLOGY

The information on this map is for assessment purposes only, is not a legal survey, and is not intended to be used for conveyance.

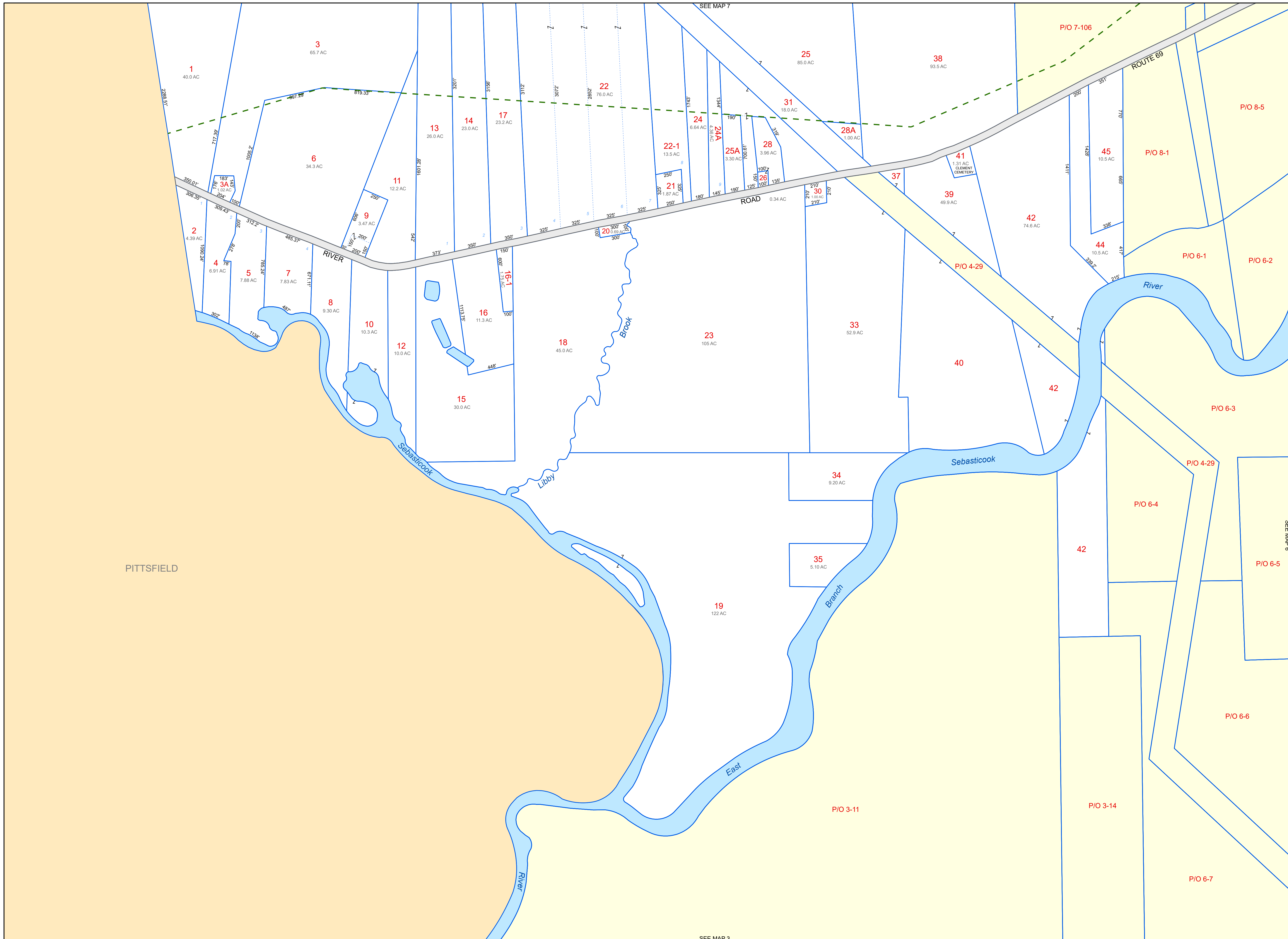
SCALE: 1 in = 400 ft



Original map prepared by Eastern Mapping Services
 Map updated by LatLong Logic, LLC with
 Maine Assessment and Appraisal Services, Inc.

Assessment date: April 1, 2023
 Print date: 10/31/2024

Detroit Assessor's Office
 35 South Main Street
 Detroit, Maine 04929
 (207) 257-4488



PROPERTY MAPS
Tax Map 6
DETROIT
 Somerset County, ME

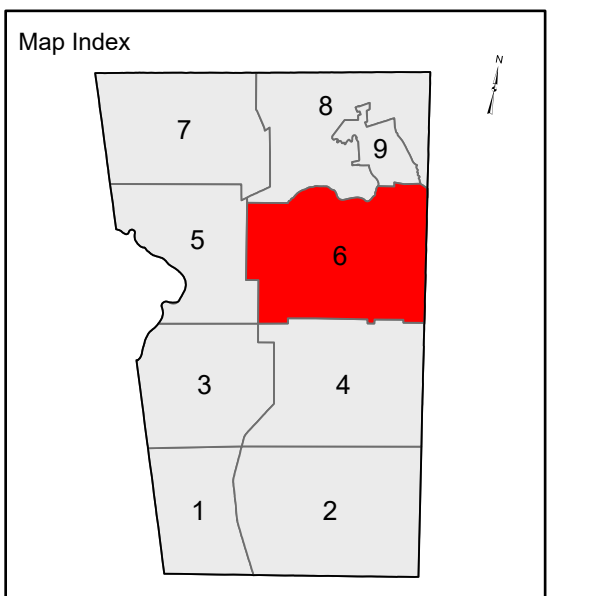
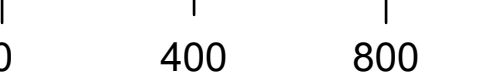


LEGEND

- PROPERTY LINE
- PUBLIC RIGHT-OF-WAY
- PRIVATE RIGHT-OF-WAY
- RAILROAD RIGHT-OF-WAY
- HISTORIC/SUBDIVISION LINE
- EASEMENT
- PARCEL HOOK
- 2-1** PARCEL ID NUMBER
- 150'** SURVEY DIMENSION (FEET)
- 1** SURVEY LOT NUMBER
- 1.25 AC** ASSESSED ACREAGE
- HYDROLOGY

The information on this map is for assessment purposes only, is not a legal survey, and is not intended to be used for conveyance.

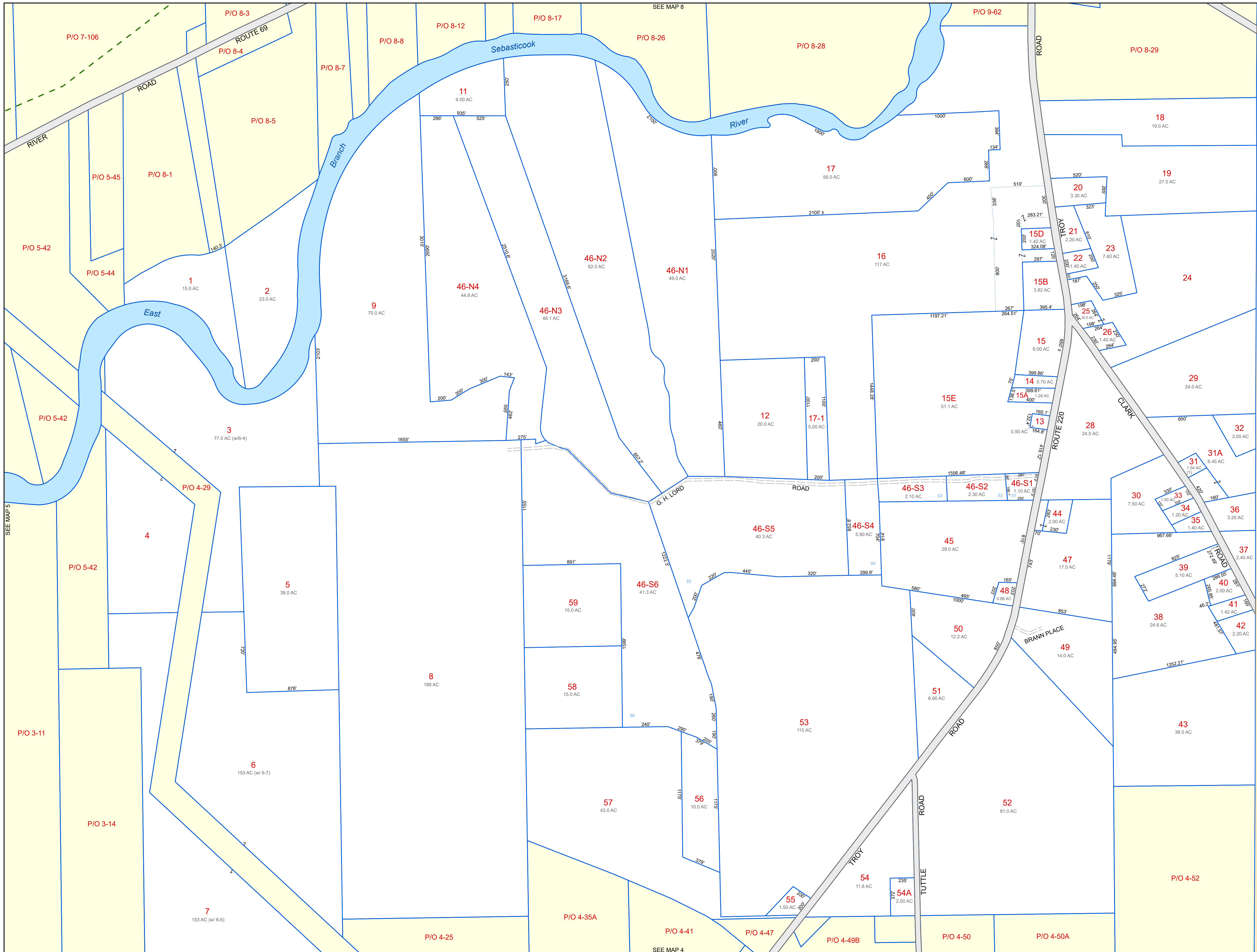
SCALE: 1 in = 400 ft

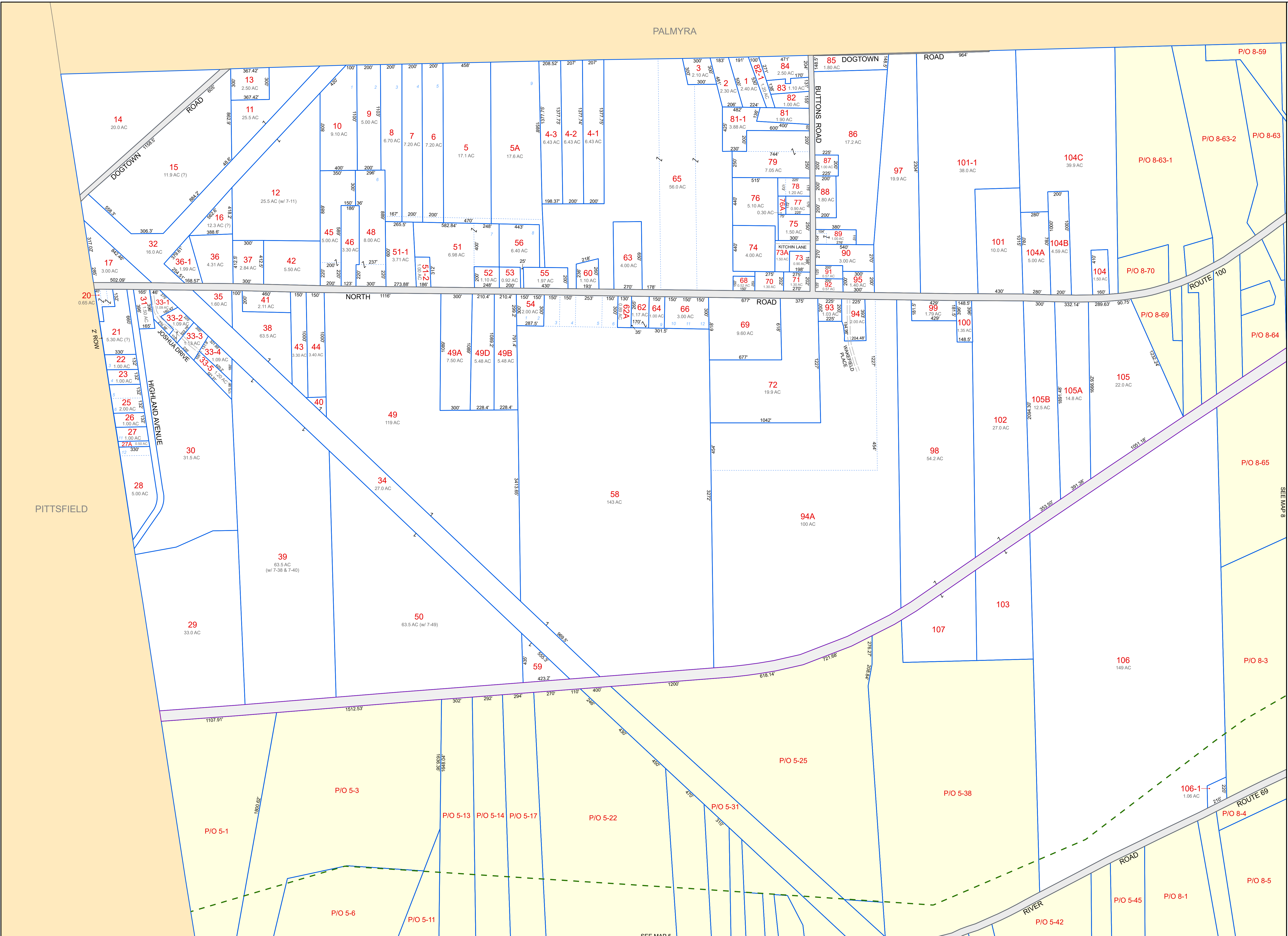


Original map prepared by Eastern Mapping Services
 Map updated by LatLong Logic, LLC with
 Maine Assessment and Appraisal Services, Inc.

Assessment date: April 1, 2023
 Print date: 10/31/2024

Detroit Assessor's Office
 35 South Main Street
 Detroit, Maine 04929
 (207) 257-4488



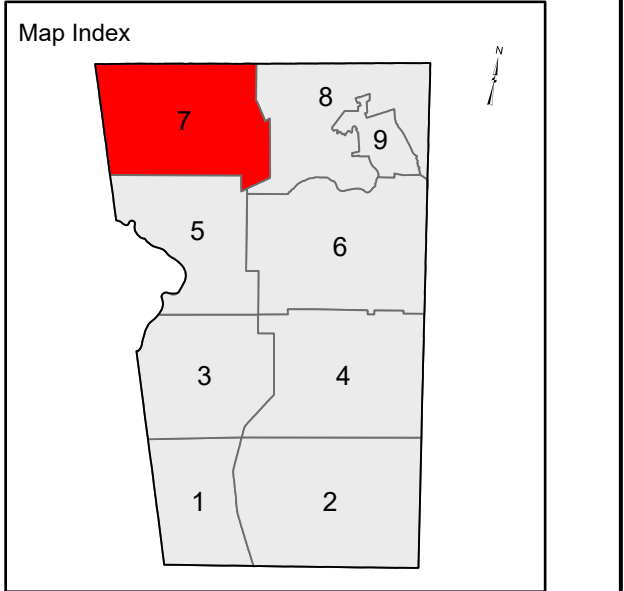
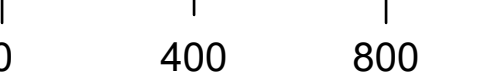


LEGEND

- PROPERTY LINE
- PUBLIC RIGHT-OF-WAY
- PRIVATE RIGHT-OF-WAY
- RAILROAD RIGHT-OF-WAY
- HISTORIC/SUBDIVISION LINE
- EASEMENT
- PARCEL HOOK
- 2-1 PARCEL ID NUMBER
- 150' SURVEY DIMENSION (FEET)
- SURVEY LOT NUMBER
- ASSESSED ACREAGE
- HYDROLOGY

The information on this map is for assessment purposes only, is not a legal survey, and is not intended to be used for conveyance.

SCALE: 1 in = 400 ft



Original map prepared by Eastern Mapping Services
Map updated by LatLong Logic, LLC with
Maine Assessment and Appraisal Services, Inc.

Assessment date: April 1, 2023
Print date: 10/31/2024

Detroit Assessor's Office
35 South Main Street
Detroit, Maine 04929
(207) 257-4488

PROPERTY MAPS
Tax Map 8
DETROIT
 Somerset County, ME

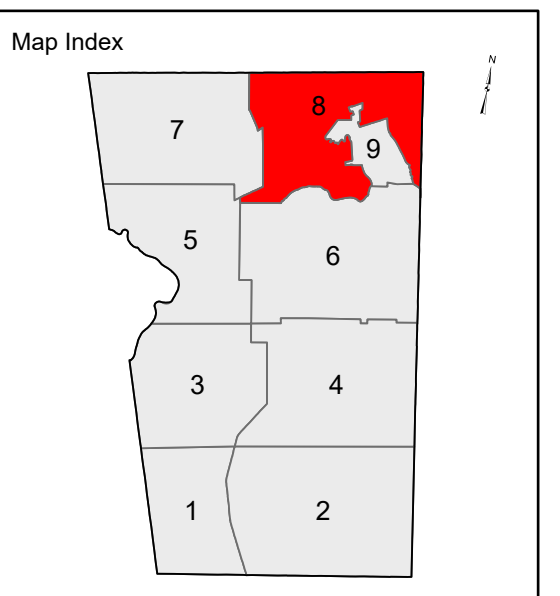


LEGEND

- PROPERTY LINE
- PUBLIC RIGHT-OF-WAY
- PRIVATE RIGHT-OF-WAY
- RAILROAD RIGHT-OF-WAY
- HISTORIC/SUBDIVISION LINE
- EASEMENT
- PARCEL HOOK
- 2-1** PARCEL ID NUMBER
- 150'** SURVEY DIMENSION (FEET)
- 1** SURVEY LOT NUMBER
- 1.25 AC** ASSESSED ACREAGE
- HYDROLOGY

The information on this map is for assessment purposes only, is not a legal survey, and is not intended to be used for conveyance.

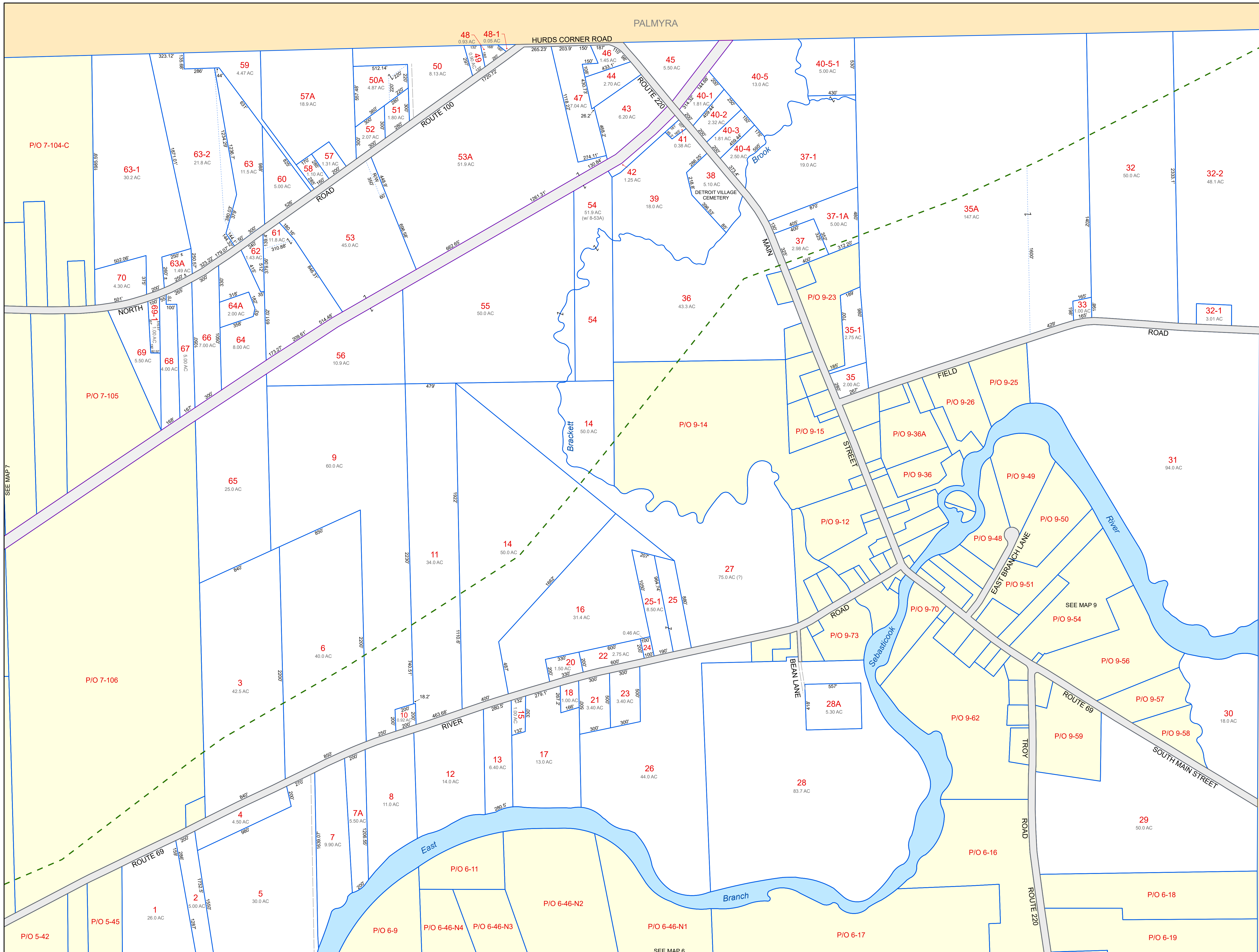
SCALE: 1 in = 400 ft

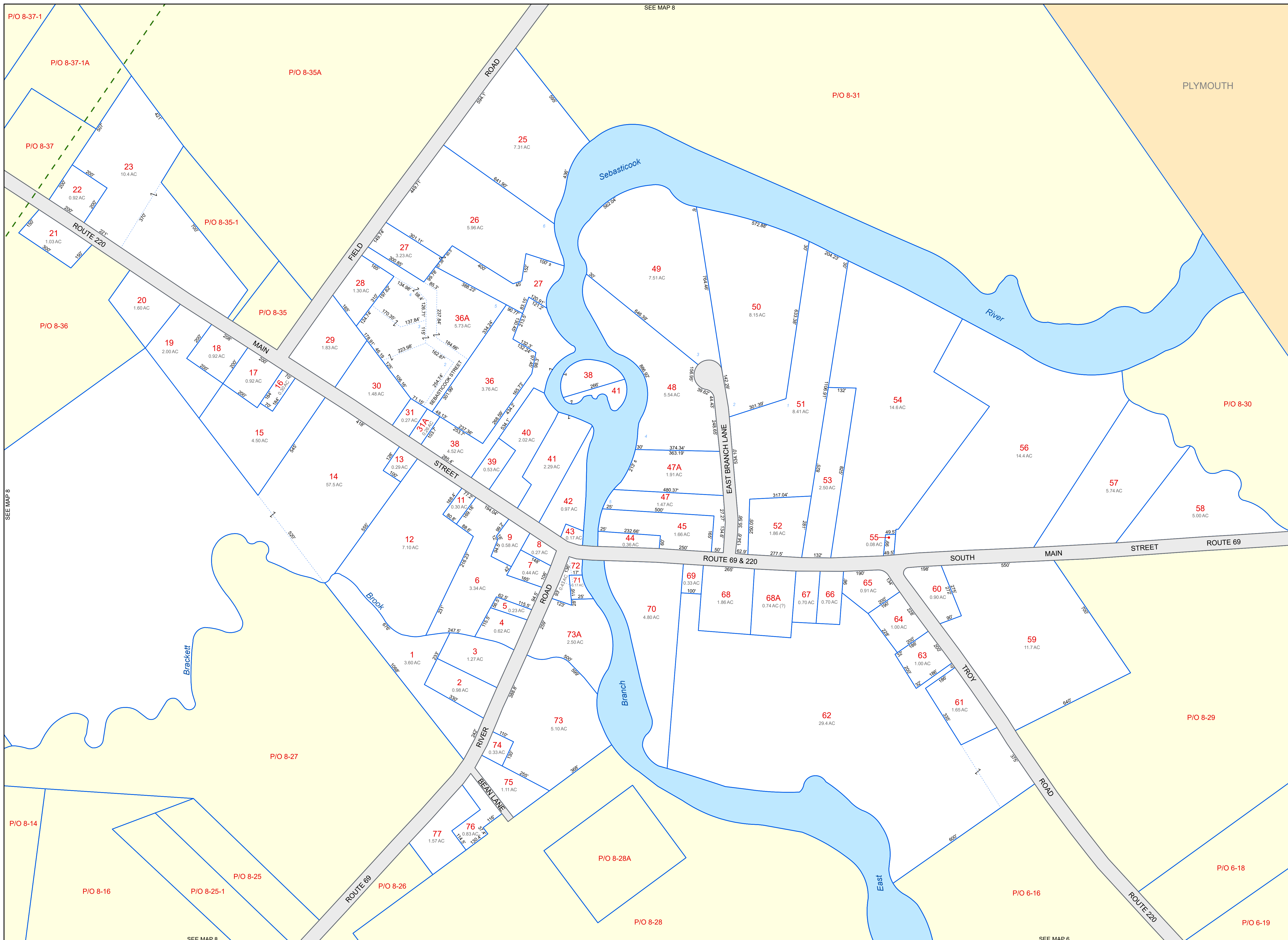


Original map prepared by Eastern Mapping Services
 Map updated by LatLong Logic, LLC with
 Maine Assessment and Appraisal Services, Inc.

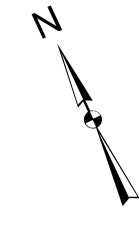
Assessment date: April 1, 2023
 Print date: 10/31/2024

Detroit Assessor's Office
 35 South Main Street
 Detroit, Maine 04929
 (207) 257-4488



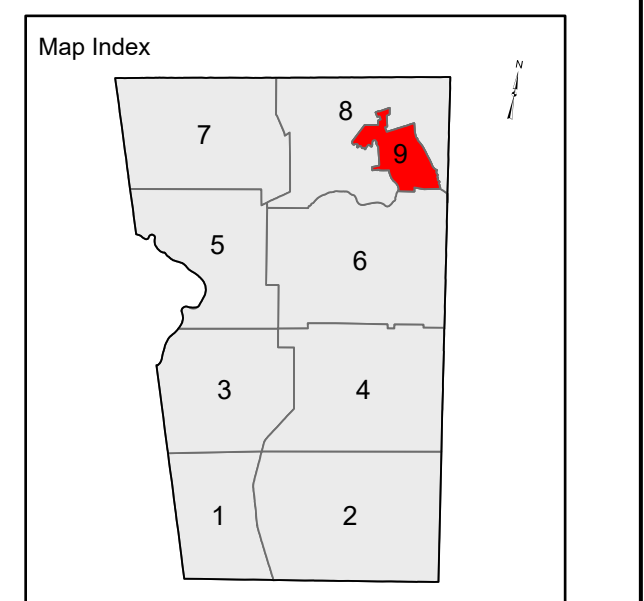
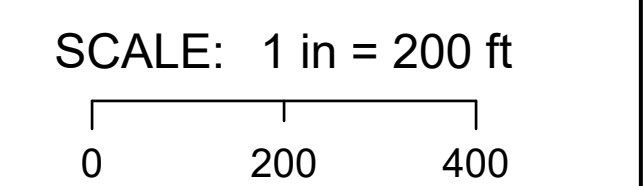


PROPERTY MAPS
Tax Map
9
DETROIT
 Somerset County, ME



- LEGEND**
- PROPERTY LINE
 - PUBLIC RIGHT-OF-WAY
 - PRIVATE RIGHT-OF-WAY
 - RAILROAD RIGHT-OF-WAY
 - HISTORIC/SUBDIVISION LINE
 - EASEMENT
 - PARCEL HOOK
 - 2-1** PARCEL ID NUMBER
 - 150'** SURVEY DIMENSION (FEET)
 - 1** SURVEY LOT NUMBER
 - 1.25 AC** ASSESSED ACREAGE
 - HYDROLOGY

The information on this map is for assessment purposes only, is not a legal survey, and is not intended to be used for conveyance.



Original map prepared by Eastern Mapping Services
 Map updated by LatLong Logic, LLC with
 Maine Assessment and Appraisal Services, Inc.

Assessment date: April 1, 2023
 Print date: 10/31/2024

Detroit Assessor's Office
 35 South Main Street
 Detroit, Maine 04929
 (207) 257-4488